

FEATURES

- Vertical model
- High-contrast dial face, sealed with O-ring
- Mineral glass viewing panel for best protection:
 - against cracking, scratching or damage caused by hot shavings
 - optimum resistance to solvents
- Matt chrome-plated protective casing with three integrated dovetail guide rails
- Shockproof measuring mechanism
- Anti-magnetic model
- Automatic adjustment to the contacting direction ensuring infallible readings
- Ball bearing mounted double lever
- Friction clutch overload protection
- **Package contains:** case, instruction manual, spanner for changing the styli, stylus dia. \varnothing 2 mm, mounting shaft 800a8



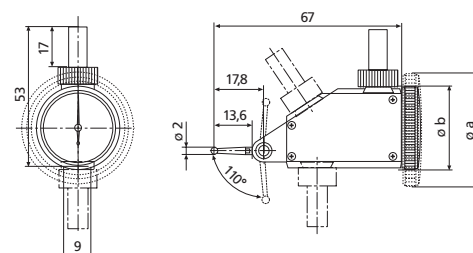
Application:

- Measurement of concentricity, alignment, parallelism and flatness
- Centering of bores and shafts
- Parallel or perpendicular alignment of work pieces

TECHNICAL DATA

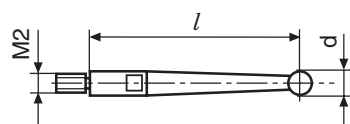
Order no.	4302200	
Product type	800 V	
Measuring range	mm	± 0.4
Graduation value	mm	0.01
Measuring surface	carbide	
Scale diameter	mm	28
Type of dial face	40-0-40	
Dial color	Yellow	
Measuring force	N	0.2
Range per rev.	mm	0.8
Deviation range f_e	μm	10
Total deviation range f_{ges}	μm	13
Hysteresis f_u	μm	3
Partial measuring span f_t	μm	5
Repeatability f_w	μm	3
Standard	DIN 2270	

Order no.	b	Measuring anvil length
	mm	mm
4302200	30	14.5



ACCESSORIES

Order no.	Product name	Product type
4305870	Stylus \varnothing 1.0 mm, carbide, $l = 14.5$ mm	800 ts
4305850	Stylus \varnothing 2.0 mm, carbide, $l = 14.5$ mm	800 ts
4305871	Stylus \varnothing 3.0 mm, carbide, $l = 14.5$ mm	800 ts
4309051	Stylus \varnothing 2.0 mm, ruby, $l = 14.5$ mm	800 tsr
4305868	Spanner	



800 tb;800 tbr;800 te;800 ter;800 tl;800 tlr;800 ts;800 tsr;801 tl

FEATURES

Vertical model

- High-contrast dial face, sealed with O-ring
- Mineral glass viewing panel for best protection:
 - against cracking, scratching or damage caused by hot shavings
 - optimum resistance to solvents
- Matt chrome-plated protective casing with three integrated dovetail guide rails
- Shockproof measuring mechanism
- Anti-magnetic model
- Automatic adjustment to the contacting direction ensuring infallible readings
- Ball bearing mounted double lever
- Friction clutch overload protection
- **Package contains:** case, instruction manual, spanner for changing the styli, stylus dia. \varnothing 2 mm, mounting shaft 800a3/8



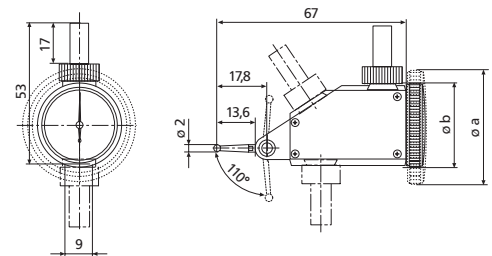
Application:

- Measurement of concentricity, alignment, parallelism and flatness
- Centering of bores and shafts
- Parallel or perpendicular alignment of work pieces

TECHNICAL DATA

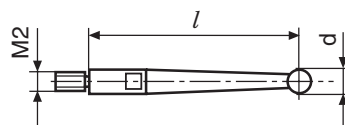
Order no.	4302950	
Product type	801 V	
Measuring range	inch	$\pm .015''$
Graduation value	inch	.0005''
Measuring surface	carbide	
Scale diameter	inch	1.1''
Type of dial face	15-0-15	
Dial color	Green	
Measuring force	N	0.2
Range per rev.	inch	.03''
Deviation range f_e	inch	.0004''
Total deviation range f_{ges}	inch	.0005''
Hysteresis f_u	inch	.00012''
Partial measuring span f_t	inch	.0002''
Repeatability f_w	inch	.0001''
Standard	Factory standard	

Order no.	b	Measuring anvil length
	mm	mm
4302950	30	14.5



ACCESSORIES

Order no.	Product name	Product type
4305870	Stylus \varnothing 1.0 mm, carbide, $l = 14.5$ mm	800 ts
4305850	Stylus \varnothing 2.0 mm, carbide, $l = 14.5$ mm	800 ts
4305871	Stylus \varnothing 3.0 mm, carbide, $l = 14.5$ mm	800 ts
4309051	Stylus \varnothing 2.0 mm, ruby, $l = 14.5$ mm	800 tsr
4305868	Spanner	



800 tb;800 tbr;800 te;800 ter;800 tl;800 tlr;800 ts;800 tsr;801 tl

FEATURES

- Vertical model
- High-contrast dial face, sealed with O-ring
- Mineral glass viewing panel for best protection:
 - against cracking, scratching or damage caused by hot shavings
 - optimum resistance to solvents
- Matt chrome-plated protective casing with three integrated dovetail guide rails
- Shockproof measuring mechanism
- Anti-magnetic model
- Automatic adjustment to the contacting direction ensuring infallible readings
- Ball bearing mounted double lever
- Friction clutch overload protection
- Package contains:** case, instruction manual, spanner for changing the styli, stylus dia. \varnothing 2 mm, mounting shaft 800a8



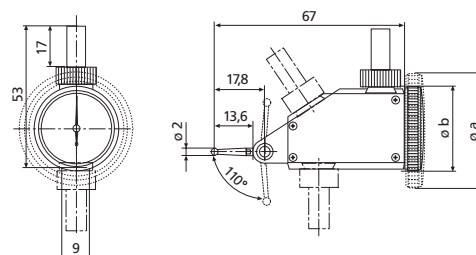
Application:

- Measurement of concentricity, alignment, parallelism and flatness
- Centering of bores and shafts
- Parallel or perpendicular alignment of work pieces

TECHNICAL DATA

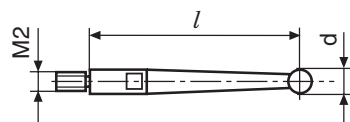
Order no.	4302250	
Product type	800 VGM	
Measuring range	mm	± 0.1
Graduation value	mm	0.002
Measuring surface	carbide	
Scale diameter	mm	38
Type of dial face	100–0–100	
Dial color	Yellow	
Measuring force	N	0.25
Range per rev.	mm	0.2
Deviation range f_e	μm	3
Total deviation range f_{ges}	μm	4
Hysteresis f_u	μm	2
Partial measuring span f_t	μm	2
Repeatability f_w	μm	1.5
Standard	DIN 2270	

Order no.	a	Measuring anvil length
	mm	mm
4302250	40.5	14.5



ACCESSORIES

Order no.	Product name	Product type
4305870	Stylus \varnothing 1.0 mm, carbide, $l = 14.5$ mm	800 ts
4305850	Stylus \varnothing 2.0 mm, carbide, $l = 14.5$ mm	800 ts
4305871	Stylus \varnothing 3.0 mm, carbide, $l = 14.5$ mm	800 ts
4309051	Stylus \varnothing 2.0 mm, ruby, $l = 14.5$ mm	800 tsr
4305868	Spanner	



800 tb;800 tbr;800 te;800 ter;800 tl;800 tlr;800 ts;800 tsr;801 tl

FEATURES

Vertical model

- High-contrast dial face, sealed with O-ring
- Mineral glass viewing panel for best protection:
 - against cracking, scratching or damage caused by hot shavings
 - optimum resistance to solvents
- Matt chrome-plated protective casing with three integrated dovetail guide rails
- Shockproof measuring mechanism
- Anti-magnetic model
- Automatic adjustment to the contacting direction ensuring infallible readings
- Ball bearing mounted double lever
- Friction clutch overload protection
- **Package contains:** case, instruction manual, spanner for changing the styli, stylus dia. \varnothing 2 mm, mounting shaft 800a3/8



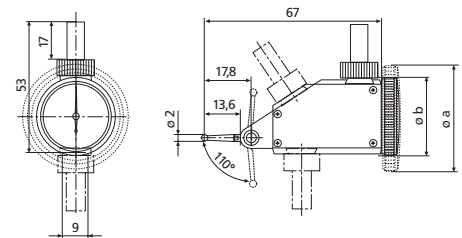
Application:

- Measurement of concentricity, alignment, parallelism and flatness
- Centering of bores and shafts
- Parallel or perpendicular alignment of work pieces

TECHNICAL DATA

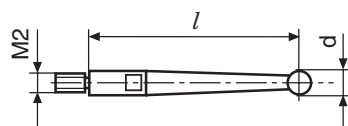
Order no.	4302960	
Product type	801 VGM	
Measuring range	inch	$\pm .004''$
Graduation value	inch	.0001''
Measuring surface	carbide	
Scale diameter	inch	1.5''
Type of dial face	4-0-4	
Dial color	Green	
Measuring force	N	0.25
Range per rev.	inch	.008''
Deviation range f_e	inch	.00012''
Total deviation range f_{ges}	inch	.00016''
Hysteresis f_u	inch	.00008''
Partial measuring span f_t	inch	.00008''
Repeatability f_w	inch	.0001''
Standard	Factory standard	

Order no.	a	Measuring anvil length
	mm	mm
4302960	40.5	14.5



ACCESSORIES

Order no.	Product name	Product type
4305870	Stylus \varnothing 1.0 mm, carbide, l = 14.5 mm	800 ts
4305850	Stylus \varnothing 2.0 mm, carbide, l = 14.5 mm	800 ts
4305871	Stylus \varnothing 3.0 mm, carbide, l = 14.5 mm	800 ts
4309051	Stylus \varnothing 2.0 mm, ruby, l = 14.5 mm	800 tsr
4305868	Spanner	



800 tb;800 tbr;800 te;800 ter;800 tl;800 tlr;800 ts;800 tsr;801 tl