

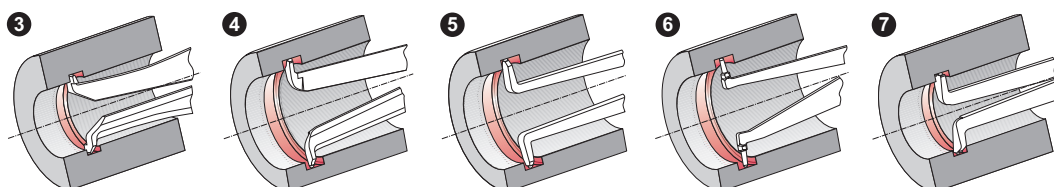
# MaraMeter 838 TI

Gage for Internal Measurement



## FEATURES

- Contact points made of carbide
- Absolute measuring instrument
- Easy-to-read tolerance markers
- IP protection category: IP 65
- Package contains: test certificate



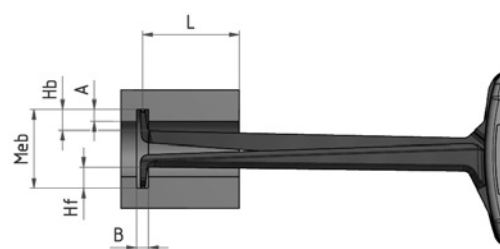
Application:

- For measuring bores and internal grooves
- Easy to operate, portable and user-friendly

## TECHNICAL DATA

Order no.	4495580	4495581	4495582	4495583	4495584	4495585	4495586	4495587	
Product type	838 TI								
Measuring range	mm 5 –15	10 –30	20 –40	30 –50	40 –60	50 –70	15 –65	40 –90	
Graduation value	mm 0.005	0.01			0.01		0.05		
Measuring depth	mm 35	85			188		192		
Error limit	mm 0.015	0.03			0.05		0.05		
Repeatability	mm 0.005	0.01			0.025		0.025		
Groove depth	mm 2.3	5.2	7	8.3		5.5	8.3		
Groove width	mm 0.8	1.2		1.9		2.4		2.4	
Form of measuring contacts	4		5		6		7		6
Diameter of measuring contact ball	mm 0.6	1			1.5		2		
Measuring force	N 0.8 –1.2	1.1 –1.6			0.9 –1.9		0.9 –1.9		

Order no.	A	B	D	Hb	Hf	Dimension L
	mm	mm	mm	mm	mm	mm
4495580	2.3	0.80	0.6	2.5	2.5	35
4495581	5.2	1.20	1	5.4	5.4	85
4495582	7	1.20	1	7.3	7.3	85
4495583	7	1.20	1	7.3	7.3	85
4495584	8.3	1.20	1	12.2	12.2	85
4495585	8.3	1.20	1	12.2	12.2	85
4495586	5.5	1.90	1.5	6	6	188
4495587	8.3	2.40	2	8.5	8.5	192



# MaraMeter 838 EI

## Electronic Gage for Internal Measurement

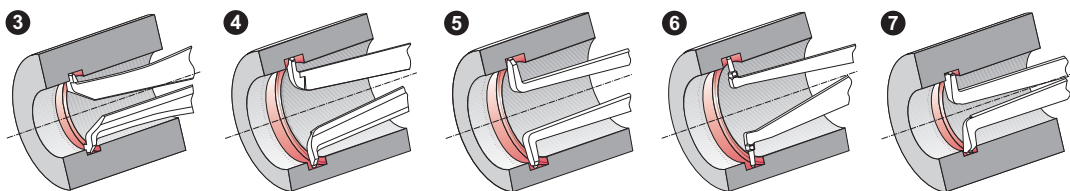


### FUNCTIONS

- ON/OFF
- mm/inch
- ABS (display can be set to zero without losing reference to preset)
- TOL (enter tolerance limit values)

### FEATURES

- High contrast analog and digital LCD
- Tolerance displayed with 2 LEDs
- **Data interface:** Digimatic, USB
- **Energy supply:** Battery operation (2x 1.5V AAA)
- **IP protection category:** IP 67
- **Package contains:** instruction manual, battery, test certificate



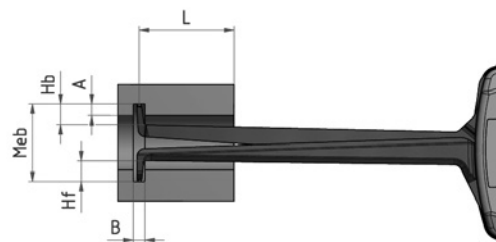
Application:

- Specified measuring programs according to application
- Absolute/relative measuring program

### TECHNICAL DATA

Order no.	4495590	4495591	4495592	4495593	4495594	4495595	4495598	4495599	4495600	
Product type	838 EI									
Measuring range	mm 5-15	10-30	20-40	30-50	40-60	50-70	13-43	30-60	50-80	
Graduation value	mm 0.005	0.01						0.02		
Measuring depth	mm 35	85			127			132		
Error limit	mm 0.015	0.03						0.04		
Repeatability	mm 0.005	0.01						0.02		
Groove depth	mm 2.3	5.2	7	8.3			5.7	6.2	8.3	
Groove width	mm 0.8	1.2			6			1.6	1.8	2.4
Form of measuring contacts	4		5		6			6		
Diameter of measuring contact ball	mm 0.6	1			1.3			1.5	2	
Measuring force	N 0.8-1.2	1.1-1.6						1.2-1.7		

Order no.	A	B	D	Hb	Hf	Dimension L
	mm	mm	mm	mm	mm	mm
4495590	2.3	0.80	0.6	2.5	2.5	35
4495591	5.2	1.20	1	5.4	5.4	85
4495592	7	1.20	1	7.3	7.3	85
4495593	7	1.20	1	7.3	7.3	85
4495594	8.3	1.20	1	12.2	12.2	85
4495595	8.3	1.20	1	12.2	12.2	85
4495598	5.7	1.60	1.3	5.7	5.7	127
4495599	6.2	1.80	1.5	6.5	6.5	132
4495600	8.3	2.40	2	8.5	8.5	132



### ACCESSORIES

Order no.	Product name	Product type
4495083	Digimatic data cable (1.5 m)	838 di (A)
4495079	838 USB Data connection cable USB (1.5 m)	838 USB