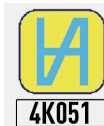




MICRON FORCE WATERPROOF IP67 CALIPER MICROTECH



ISO/IES 17025:2006 (cert. № 4K051)



Quality management system
ISO 9001:2015 (cert. № U228396)





1.MODIFICATIONS

Item No	Range	Resolution	Accuracy	Jaw length	Measuring force	Protection class	Lubrication system
	mm	mm	mm	mm	N		
141055111	0-150	0,001	±0,007	40/16	8	IP-65	+
141055211	0-200	0,001	±0,010	50/17	8	IP-65	+
141055311	0-300	0,001	±0,015	60/20	8	IP-65	+

*MAX ERROR FOR INTERNAL END DEPTH MEASUREMENTS DIN-862

2.BUTTON FUNCTIONS





3. OPERATION INSTRUCTIONS

- 3.1 Wipe with a clean cloth, soaked in gasoline, measuring surface of the frame and gauge calipers to remove anti-corrosion oil. Then wipe them with a clean dry cloth.
- 3.2 If necessary, open the battery cover; insert the battery (type CR2032) according to the polarity of the electrodes. Blinking display information or absence suggests replacing battery.
- 3.3 Check the zero setting of the caliper. Sum the measuring jaws to contact with each other. Force is generated with a measuring force indication. To create the recommended force (8N) by the block adjustment and press ZERO button.
- 3.4 During the measurement, measuring jaws should to sum to the measured object without knocking.
- 3.5 During the measurement avoid warps of measuring surfaces of the instrument. Measuring surface must be fully in contact with the measurement object.
- 3.6 Optimal measuring force for this size caliper $8 \pm 2N$. During a measuring process control optimal measuring force on Measuring force indication window.
- 3.7 After finishing work wipe the measuring surfaces of the caliper with a cloth soaked in gasoline and apply anticorrosion oil.



WARNING!

IN THE PROCESS OF WORKING WITH CALIPERS SHOULD BE AVOIDED:

Scratches on the measuring surfaces;

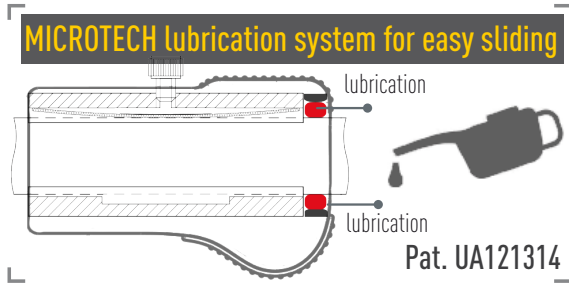
Measuring the size of object in the process of machining;

Shocks or dropping, avoid bending of rod or other surfaces.

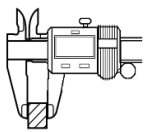




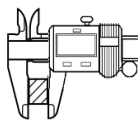
4.LUBRICATION SYSTEM



5.INSTRUMENT FIGURE



NO



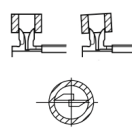
YES



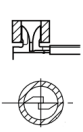
NO



YES



NO



YES

