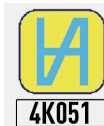




INSIDE POINT IP-67 CALIPER MICROTECH



ISO/IES 17025:2006 (cert. № 4K051)



Quality management system
ISO 9001:2015 (cert. № U228396)

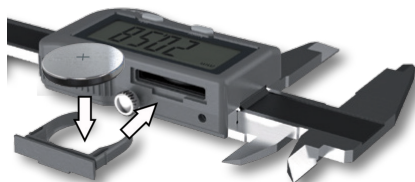
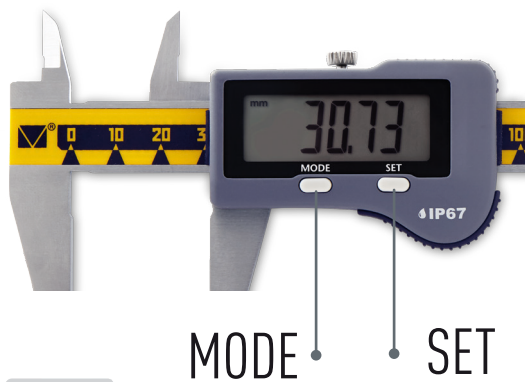




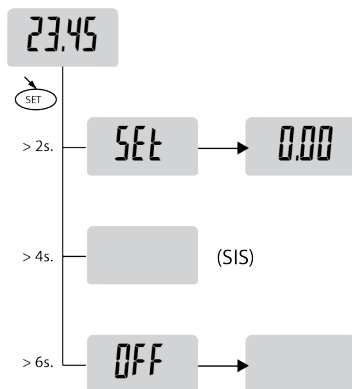
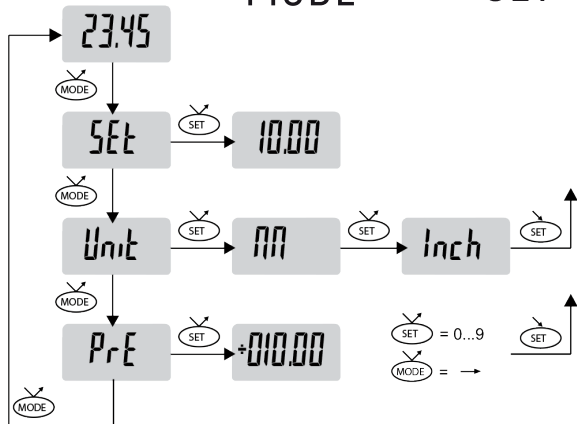
1.MODIFICATIONS

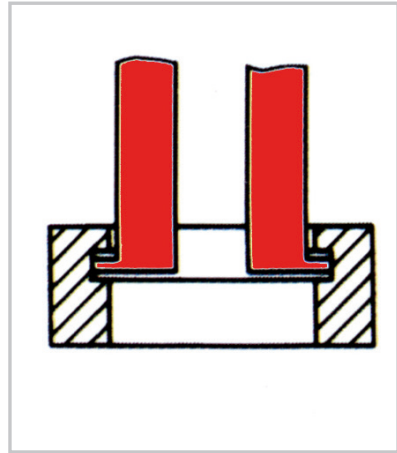
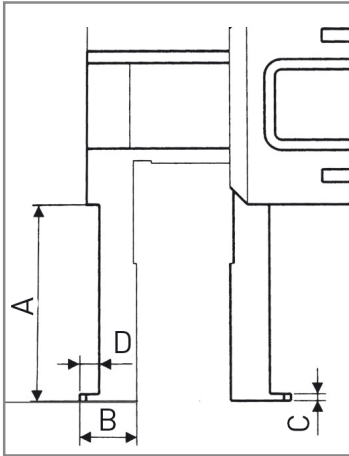
Item No	Range	Resolution	Accuracy	Sizes*				Self lubrication	Waterproof
				A	B	C	D		
141330153	20-170	0,01	±0,030	25	9	1	5	+	IP67
141330203	20-220	0,01	±0,030	43	14	1.5	5	+	IP67
141330303	30-330	0,01	±0,030	43	14	1.5	5	+	IP67

2.BUTTON FUNCTIONS & BATTERY REPLACEMENT



BATTERY REPLACEMENT





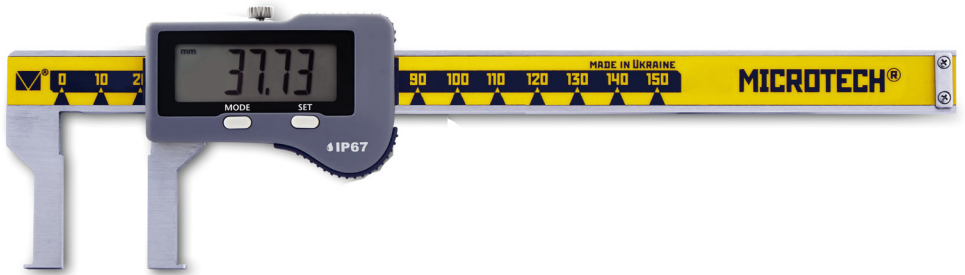
3. OPERATION INSTRUCTIONS

- 3.1 Wipe with a clean cloth, soaked in gasoline, measuring surface of the frame and gauge calipers to remove anti-corrosion oil. Then wipe them with a clean dry cloth.
- 3.2 If necessary, open the battery cover and insert the battery (CR2032) according to the polarity of the electrodes. Blinking display information or absence suggests replacing battery.
- 3.3 Caliper has electronic module with PRESET function, so no necessary make recalculation. Actual sizes of jaws installed during a manufacturing.
- 3.4. If necessary make new PRESET - switch throw MODE button to PRE menu on digital module and SET actual value.
- 3.5 This instrument has been manufactured with a degree of protection IP67, according to the IEC60529 standard
- 3.6 This caliper has Autoswitch on/ off function:
 - move electronic module for switch on caliper
 - after 20 minutes without any moving caliper will switch off
- 3.7 During the measurement, measuring jaws should to sum to the measured object without knocking.
- 3.8 During the measurement avoid warps of measuring surfaces of the instrument. Measuring surface must be fully in contact with the measurement object.





4. INSTRUMENT FIGURE



MICROTECH lubrication system for easy sliding

