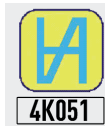




WIRELESS DIGITAL CALIPER MICROTECH



ISO/IES 17025:2006 (cert. № 4K051)



Quality management system
ISO 9001:2015 (cert. № U228396)

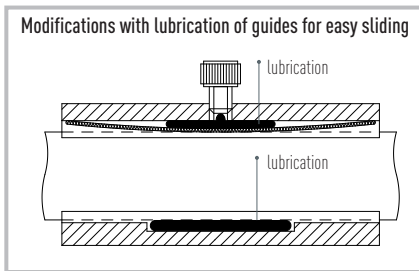




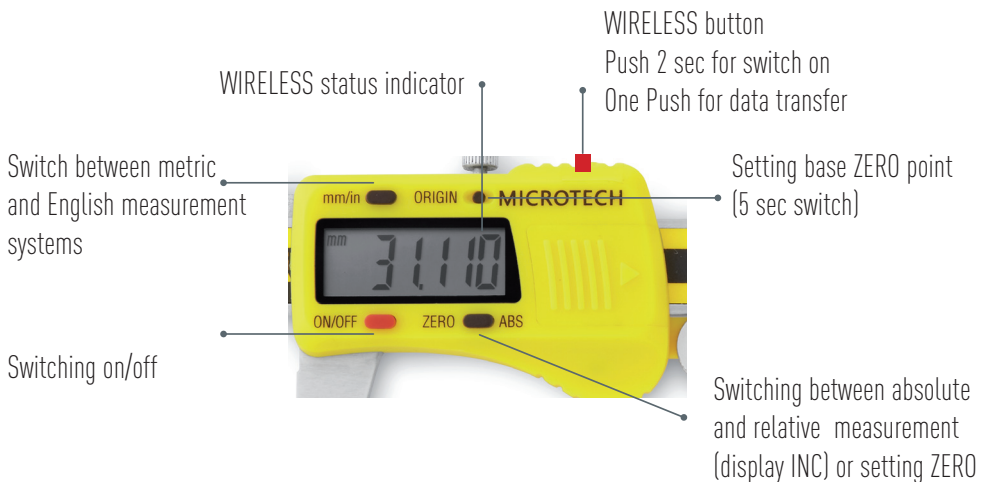
1.MODIFICATIONS

Item No	Range	Resolution	Accuracy*	Jaw		Proof	Guides lubrication	Data output
				External	Internal			
	mm	mm	mm	mm	mm			
141082192	0-150	0,005	$\pm 0,020$	40	16	IP-54	-	Wireless
141084192	0-150	0,005	$\pm 0,020$	40	16	IP-54	+	Wireless
141082292	0-200	0,005	$\pm 0,020$	50	20	IP-54	-	Wireless
141084292	0-200	0,005	$\pm 0,020$	50	20	IP-54	+	Wireless
141082393	0-300	0,005	$\pm 0,030$	60	20	IP-54	-	Wireless
141084393	0-300	0,005	$\pm 0,030$	60	20	IP-54	+	Wireless

*MAX ERROR FOR INTERNAL END DEPTH MEASUREMENTS DIN-862



2.BUTTON FUNCTIONS





3. OPERATION INSTRUCTIONS

- 3.1 Wipe with a clean cloth, soaked in gasoline, measuring surface of the frame and gauge calipers to remove anti-corrosion oil. Then wipe them with a clean dry cloth.
- 3.2 If necessary, open the battery cover; insert the battery (type CR1632) according to the polarity of the electrodes. Blinking display information or absence suggests replacing battery.
- 3.3 This caliper has Autoswitch on/ off function:
- move electronic module for switch on caliper
 - after 10 minutes without any moving caliper will switch off
- 3.4 During the measurement, measuring jaws should be in contact with the measured object without knocking.
- 3.5 During the measurement avoid warps of measuring surfaces of the instrument. Measuring surface must be fully in contact with the measurement object

WARNING!

IN THE PROCESS OF WORKING WITH CALIPERS SHOULD BE AVOIDED:

Scratches on the measuring surfaces;

Measuring the size of object in the process of machining;

Shocks or dropping, avoid bending of rod or other surfaces.



4. WIRELESS DATA TRANSFER

- 4.1 MICROTECH Wireless caliper equipped with Built-in Wireless data output module for transfer measuring results to Android, iOS devices or Windows PC
- For **SWITCH ON** wireless module push Wireless button (2 sec);
 - Red diode is flickering on caliper screen, when Wireless module switch on;
 - After connection caliper to SPC software, you'll see repetition of calipers screen indication on SPC software;
 - Press once Wireless button on caliper or press on SPC software results window for SAVE measuring result to SPC software;
 - For **SWITCH OFF** wireless module press a Wireless button (2 sec) or it will be switched off automatically during 10 minutes non use.
- 4.2 MICROTECH Wireless instruments has 2 modes of data transfer:
- STANDARD MODE** (non stop data transfer 4data/sec, battery work in non stop data transfer up to 50h)
- ECONOMY MODE (GATT)** (data transfer only by Wireless button push, battery work in this mode up to 6 month (100 data transfer a day), activating throw software)

MICROTECH RECOMMEND TO USE ECONOMY MODE



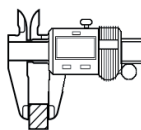
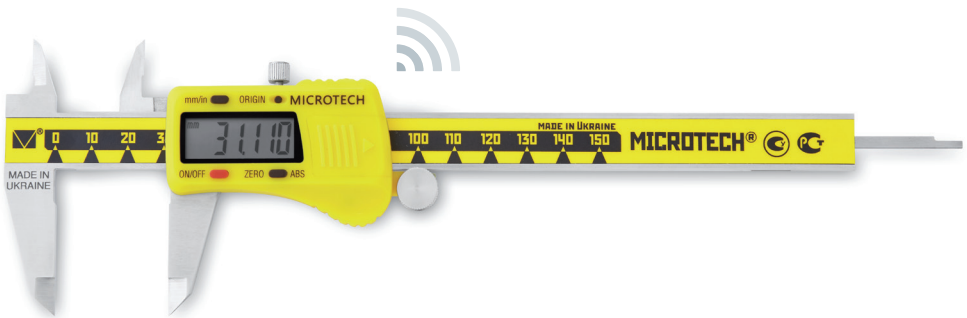


5.SOFTWARE DOWNLOAD

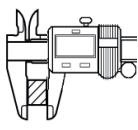


DOWNLOAD SOFTWARE ON
WWW.MICROTECH.UA

6.INSTRUMENT FIGURE



NO



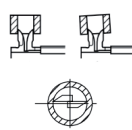
YES



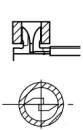
NO



YES



NO



YES

