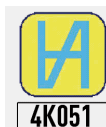




# WIRELESS DIGITAL CALIPER MICROTECH WITH CARBIDE TIPS



ISO/IES 17025:2006 (cert. № 4K051)



Quality management system  
ISO 9001:2015 (cert. № U228396)

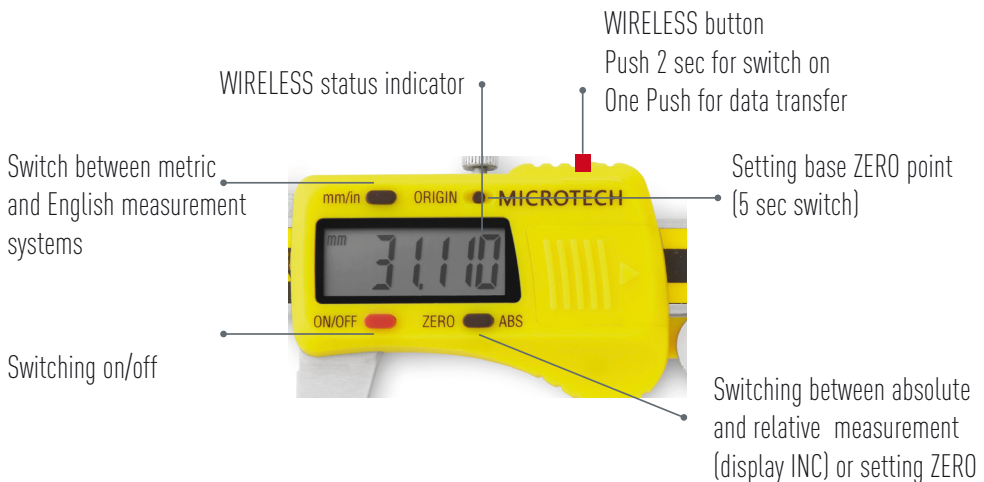




# 1.MODIFICATIONS

Item No	Range	Resolution	Accuracy*	Jaw		Proof	Carbide tips	Data output
				External	Internal			
141082192C	0-150	0,005	$\pm 0,020$	40	16	IP-54	-	Wireless
141082292C	0-200	0,005	$\pm 0,020$	50	20	IP-54	-	Wireless
141082393C	0-300	0,005	$\pm 0,030$	60	20	IP-54	-	Wireless

# 2.BUTTON FUNCTIONS





## 3. OPERATION INSTRUCTIONS

- 3.1 Wipe with a clean cloth, soaked in gasoline, measuring surface of the frame and gauge calipers to remove anti-corrosion oil. Then wipe them with a clean dry cloth.
- 3.2 If necessary, open the battery cover; insert the battery (type CR1632) according to the polarity of the electrodes. Blinking display information or absence suggests replacing battery.
- 3.3 This caliper has Autoswitch on/ off function:
- move electronic module for switch on caliper
  - after 10 minutes without any moving caliper will switch off
- 3.4 During the measurement, measuring jaws should be in contact with the measured object without knocking.
- 3.5 During the measurement avoid warps of measuring surfaces of the instrument. Measuring surface must be fully in contact with the measurement object

### WARNING!

**IN THE PROCESS OF WORKING WITH CALIPERS SHOULD BE AVOIDED:**

**Scratches on the measuring surfaces;**

**Measuring the size of object in the process of machining;**

**Shocks or dropping, avoid bending of rod or other surfaces.**



## 4. WIRELESS DATA TRANSFER

- 4.1 MICROTECH Wireless caliper equipped with Built-in Wireless data output module for transfer measuring results to Android, iOS devices or Windows PC
- For **SWITCH ON** wireless module push Wireless button (2 sec);
  - Red diode is flickering on caliper screen, when Wireless module switch on;
  - After connection caliper to SPC software, you'll see repetition of calipers screen indication on SPC software;
  - Press once Wireless button on caliper or press on SPC software results window for SAVE measuring result to SPC software;
  - For **SWITCH OFF** wireless module press a Wireless button (2 sec) or it will be switched off automatically during 10 minutes non use.
- 4.2 MICROTECH Wireless instruments has 2 modes of data transfer:
- STANDARD MODE** (non stop data transfer 4data/sec, battery work in non stop data transfer up to 50h)
- ECONOMY MODE (GATT)** (data transfer only by Wireless button push, battery work in this mode up to 6 month (100 data transfer a day), activating throw software)

**MICROTECH RECOMMEND TO USE ECONOMY MODE**



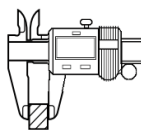
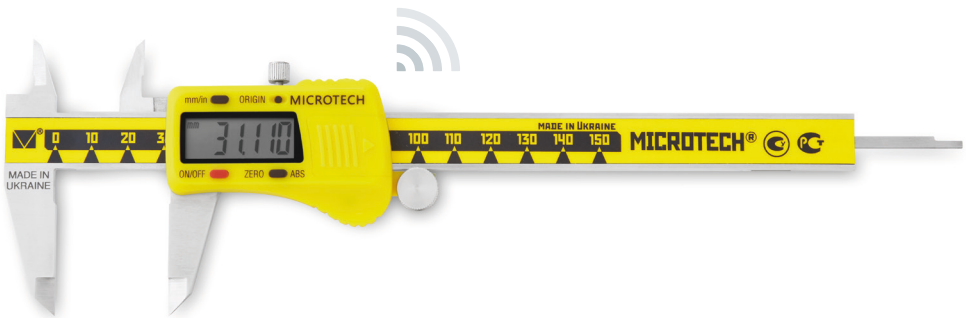


## 5.SOFTWARE DOWNLOAD

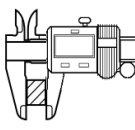


DOWNLOAD SOFTWARE ON  
[WWW.MICROTECH.UA](http://WWW.MICROTECH.UA)

## 6.INSTRUMENT FIGURE



NO



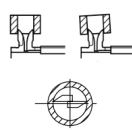
YES



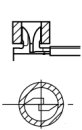
NO



YES



NO



YES

