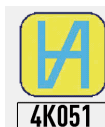




# WIRELESS FORCE CALIPER MICROTECH WITH CARBIDE TIPS



ISO/IES 17025:2006 (cert. № 4K051)



Quality management system  
ISO 9001:2015 (cert. № U228396)



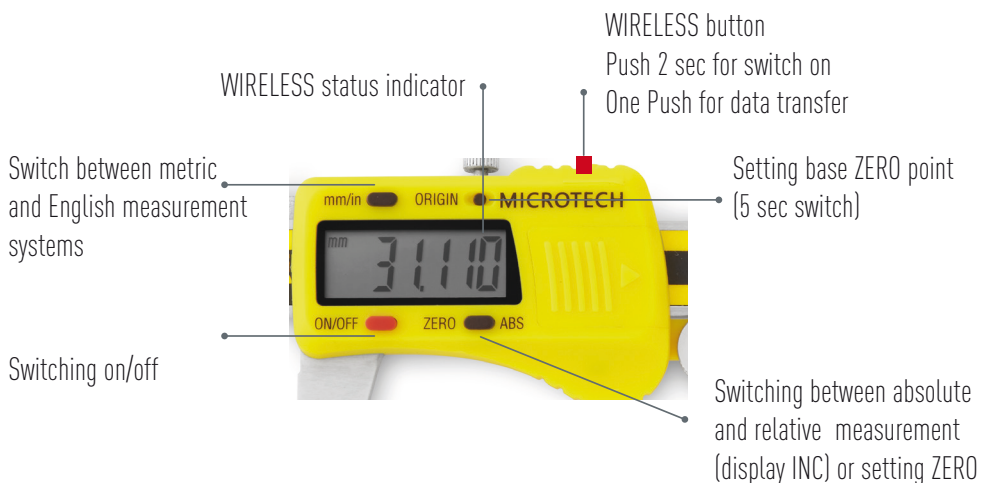


# 1.MODIFICATIONS

Item No	Range	Resolution	Accuracy*	Jaw length	Proof	Optimal measuring force	Carbide tips	Data output
	mm	mm	mm	mm		N		
141088192C	0-150	0,005	$\pm 0,010$	40	IP-54	8	+	Wireless
141088292C	0-200	0,005	$\pm 0,010$	50	IP-54	8	+	Wireless
141088392C	0-300	0,005	$\pm 0,015$	60	IP-54	8	+	Wireless

\*MAX ERROR FOR INTERNAL END DEPTH MEASUREMENTS DIN-862

# 2.BUTTON FUNCTIONS





## 3. OPERATION INSTRUCTIONS

- 3.1 Wipe with a clean cloth, soaked in gasoline, measuring surface of the frame and gauge calipers to remove anti-corrosion oil. Then wipe them with a clean dry cloth.
- 3.2 If necessary, open the battery cover; insert the battery (type CR1632) according to the polarity of the electrodes. Blinking display information or absence suggests replacing battery.  
It will be indication on display «-----» after battery chnging. Press ORIGIN button for 5 sec to start reading system.
- 3.3 Check the zero setting of the caliper. Sum the measuring jaws to contact with each other. Force is generated with a measuring force indication. To create the recommended force (8N) by the block adjustment and press ZERO button.
- 3.4 During the measurement, measuring jaws should to sum to the measured object without knocking.
- 3.5 During the measurement avoid warps of measuring surfaces of the instrument. Measuring surface must be fully in contact with the measurement object.
- 3.6 Optimal measuring force for this size caliper  $8 \pm 2N$ . During a measuring process control optimal measuring force on Measuring force indication window.
- 3.7 After finishing work wipe the measuring surfaces of the caliper with a cloth soaked in gasoline and apply anticorrosion oil.

## 4. WIRELESS DATA TRANSFER

- 4.1 MICROTECH Wireless caliper equipped with Built-in Wireless data output module for transfer measuring results to Android, iOS devices or Windows PC
  - For **SWITCH ON** wireless module push Wireless button (2 sec);
  - Red diode is flickering on caliper screen, when Wireless module switch on;
  - After connection caliper to SPC software, you'll see repetition of calipers screen indication on SPC software;
  - Press once Wireless button on caliper or press on SPC software results window for SAVE measuring result to SPC software;
  - For **SWITCH OFF** wireless module press a Wireless button (2 sec) or it will be sitched off automatically during 10 minutes non use.
- 4.2 MICROTECH Wireless instruments has 2 modes of data transfer:  
**STANDART MODE** (non stop data transfer 4data/sec, battery work in non stop data transfer up to 50h)  
**ECONOMY MODE (GATT)** (data transfer only by Wireless button push, battery work in this mode up to 6 month (100 data transfer a day), activating throw software)

**MICROTECH RECOMMEND TO USE ECONOMY MODE**



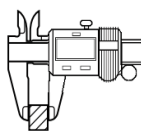
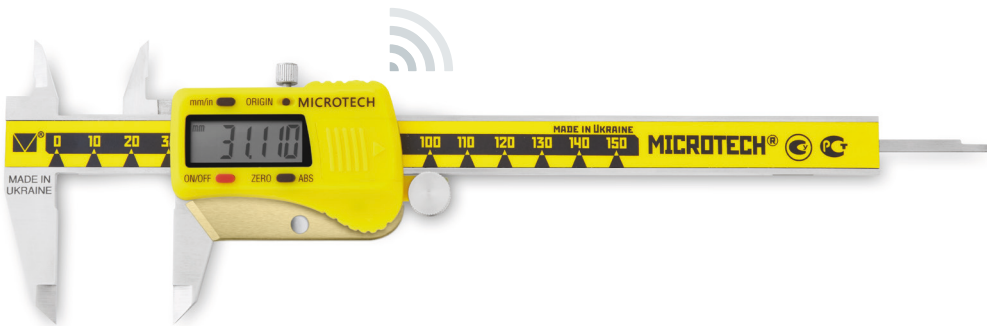


## 5.SOFTWARE DOWNLOAD

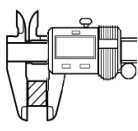


DOWNLOAD SOFTWARE ON  
[WWW.MICROTECH.UA](http://WWW.MICROTECH.UA)

## 6.INSTRUMENT FIGURE



NO



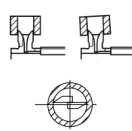
YES



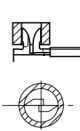
NO



YES



NO



YES

