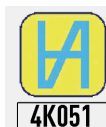




# WIRELESS FORCE WATERPROOF IP67 CALIPER MICROTECH



ISO/IES 17025:2006 (cert. № 4K051)



Quality management system  
ISO 9001:2015 (cert. № U228396)



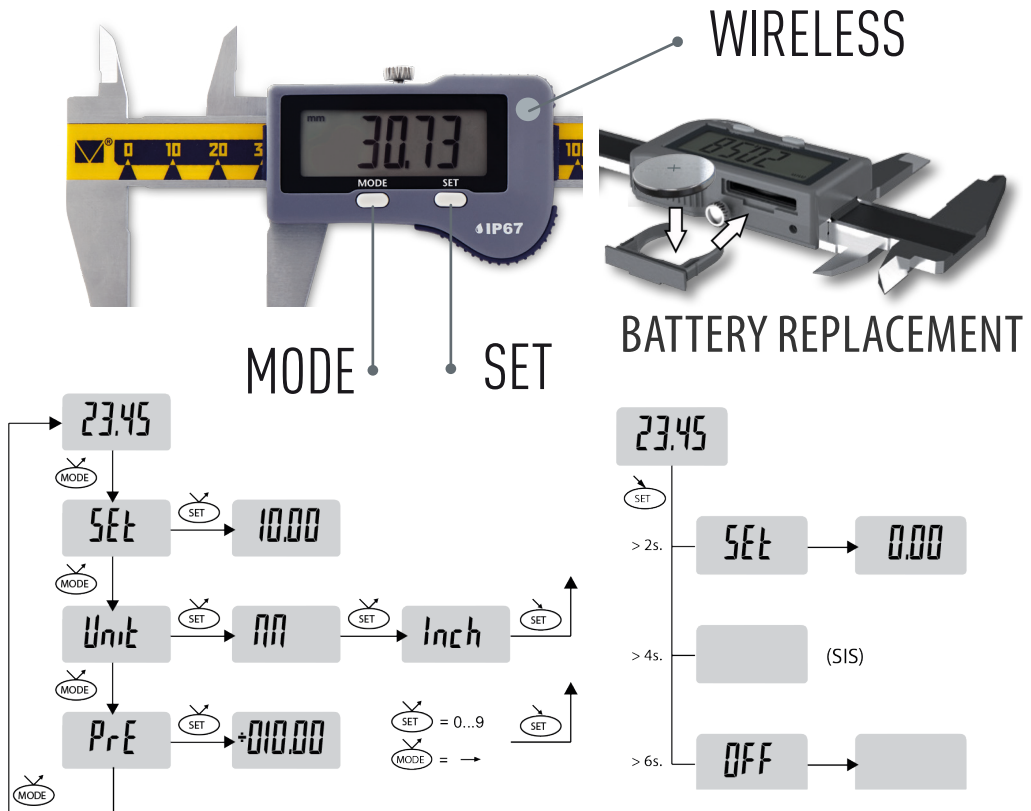


# 1.MODIFICATIONS

Item No	Range	Resolution	Accuracy*	Jaw		Measuring force	Protection class	Lubrication system	Data output
				External	Internal				
	mm	mm	mm	mm	mm	N			
141077192	0-150	0,01	$\pm 0,020$	40	16	8	IP-67	+	Wireless
141077292	0-200	0,01	$\pm 0,020$	50	20	8	IP-67	+	Wireless
141077392	0-300	0,01	$\pm 0,030$	60	20	8	IP-67	+	Wireless

\*MAX ERROR FOR INTERNAL END DEPTH MEASUREMENTS DIN-862

## 2.BUTTON FUNCTIONS & BATTERY REPLACEMENT





## 3. OPERATION INSTRUCTIONS

- 3.1 Wipe with a clean cloth, soaked in gasoline, measuring surface of the frame and gauge calipers to remove anti-corrosion oil. Then wipe them with a clean dry cloth.
- 3.2 If necessary, open the battery cover; insert the battery (type CR2032) according to the polarity of the electrodes. Blinking display information or absence suggests replacing battery.
- 3.3 Check the zero setting of the caliper. Sum the measuring jaws to contact with each other. Force is generated with a measuring force indication. To create the recommended force (8N) by the block adjustment and press SET button.
- 3.4 Optimal measuring force for this size caliper  $8 \pm 2$ N. During a measuring process control optimal measuring force on Measuring force indication window.
- 3.5 After finishing work wipe the measuring surfaces of the caliper with a cloth soaked in gasoline and apply anticorrosion oil.

## 4. WIRELESS DATA TRANSFER

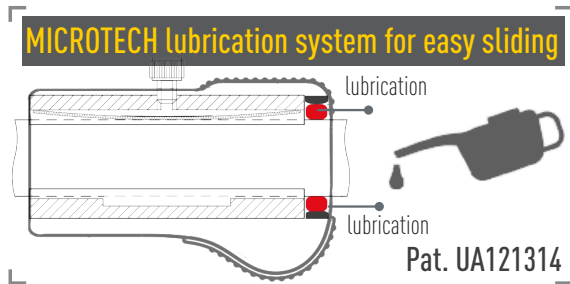
- 4.1 MICROTECH Wireless caliper equipped with Built-in Wireless data output module for transfer measuring results to Android, iOS devices or Windows PC
  - For **SWITCH ON** wireless module push Wireless button (2 sec);
  - Wireless logo on caliper screen, when Wireless module switch on;
  - After connection caliper to MDS software, you'll see repetition of calipers screen indication on MDS software;
  - Press once Wireless button on caliper or press on MDS software results window for SAVE measuring result to software;
  - Activate **ECONOMY MODE** throw MDS software. Data will be transferred only by Wireless button push (Wireless indicator bliming only by button push).
  - For **SWITCH OFF** wireless module press a Wireless button (2 sec) or it will be switched off automatically during 10 minutes non use (For economy mode not necessary switch off Wireless module).
- 4.2 MICROTECH Wireless instruments has 2 modes of data transfer:
  - STANDART MODE** (non stop data transfer 4data/sec, battery work in non stop data transfer up to 120h)
  - ECONOMY MODE (GATT)** (data transfer only by Wireless button push, battery work in this mode up to 12 month (100 data transfer a day), activating throw software)

**MICROTECH RECOMMEND TO USE ECONOMY MODE**

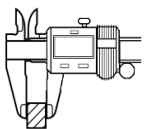




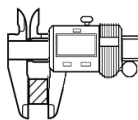
## 5. LUBRICATION SYSTEM



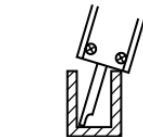
## 6. INSTRUMENT FIGURE



NO



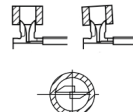
YES



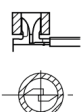
NO



YES



NO



YES

