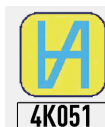




WIRELESS LOW FORCE 0,8N WATERPROOF IP67 CALIPER MICROTECH



ISO/IES 17025:2006 (cert. № 4K051)



Quality management system
ISO 9001:2015 (cert. № U228396)



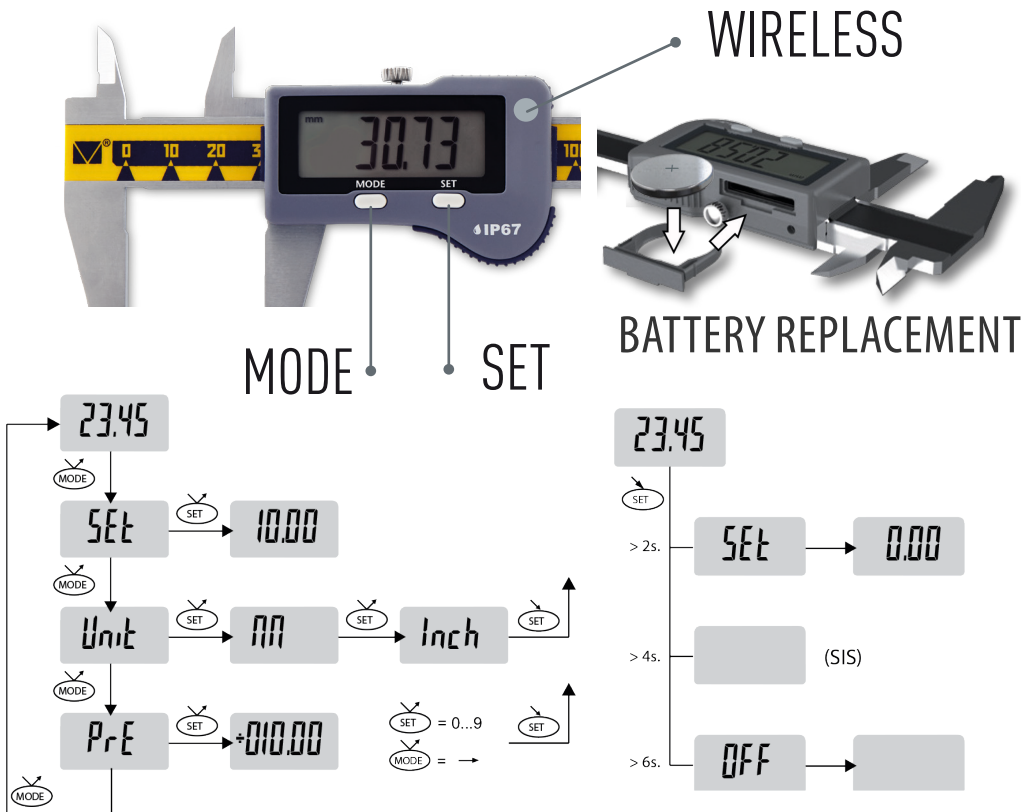


1.MODIFICATIONS

Item No	Range	Resolution	Accuracy*	Jaw		Measuring force	Protection class	Lubrication system	Data output
				External	Internal				
	mm	mm	mm	mm	mm	N			
141077193	0-150	0,01	±0,030	40	16	0,8	IP-67	+	Wireless
141077293	0-200	0,01	±0,030	50	20	0,8	IP-67	+	Wireless
141077393	0-300	0,01	±0,040	60	20	0,8	IP-67	+	Wireless

*MAX ERROR FOR INTERNAL END DEPTH MEASUREMENTS DIN-862

2.BUTTON FUNCTIONS & BATTERY REPLACEMENT





3. OPERATION INSTRUCTIONS

- 3.1 Wipe with a clean cloth, soaked in gasoline, measuring surface of the frame and gauge calipers to remove anti-corrosion oil. Then wipe them with a clean dry cloth.
- 3.2 If necessary, open the battery cover; insert the battery (type CR2032) according to the polarity of the electrodes. Blinking display information or absence suggests replacing battery.
- 3.3 Check the zero setting of the caliper. Sum the measuring jaws to contact with each other. Force is generated with a measuring force indication. To create the low force (0,8N) by the block adjustment and press ZERO button.
- 3.4 Measuring force for this size caliper $0,8 \pm 0,3N$. During a measuring process control measuring Low-force on Measuring force indication window.
- 3.5 After finishing work wipe the measuring surfaces of the caliper with a cloth soaked in gasoline and apply anticorrosion oil

4. WIRELESS DATA TRANSFER

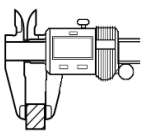
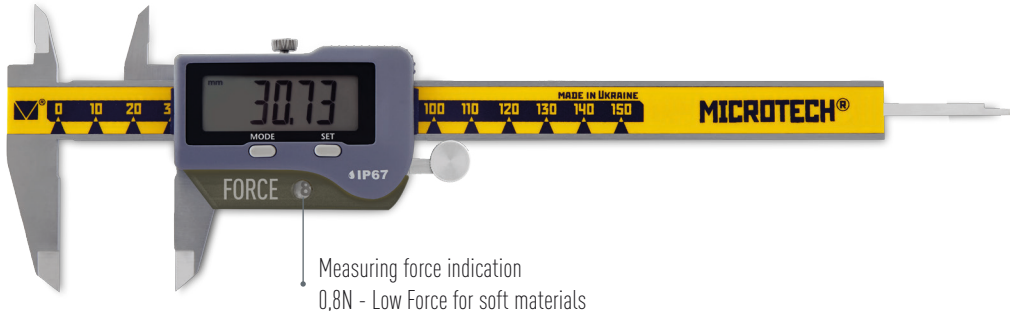
- 4.1 MICROTECH Wireless caliper equipped with Built-in Wireless data output module for transfer measuring results to Android, iOS devices or Windows PC
 - For **SWITCH ON** wireless module push Wireless button (2 sec);
 - Wireless logo on caliper screen, when Wireless module switch on;
 - After connection caliper to MDS software, you'll see repetition of calipers screen indication on MDS software;
 - Press once Wireless button on caliper or press on MDS software results window for SAVE measuring result to software;
 - Activate **ECONOMY MODE** throw MDS software. Data will be transferred only by Wireless button push (Wireless indicator bliming only by button push).
 - For **SWITCH OFF** wireless module press a Wireless button (2 sec) or it will be switched off automaticaly during 10 minutes non use (For economy mode not necessary switch off Wireless module).
- 4.2 MICROTECH Wireless instruments has 2 modes of data transfer:
 - STANDART MODE** (non stop data transfer 4data/sec, battery work in non stop data transfer up to 120h)
 - ECONOMY MODE (GATT)** (data transfer only by Wireless button push, battery work in this mode up to 12 month (100 data transfer a day), activating throw software)

MICROTECH RECOMMEND TO USE ECONOMY MODE

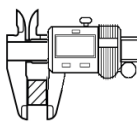




5. INSTRUMENT FIGURE



NO



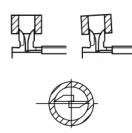
YES



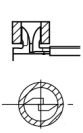
NO



YES



NO



YES

